

Main and Interior Photo Brochure

1409 8TH AVE NW

Conover

\$89,900



PROPERTY INFORMATION

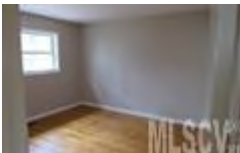
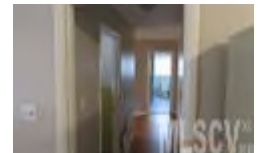
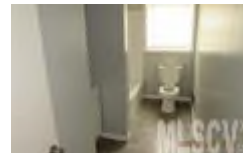
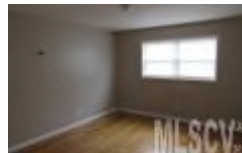
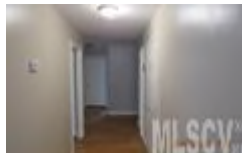
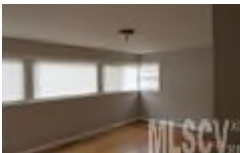
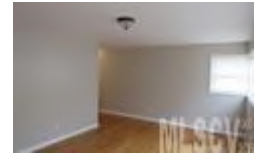
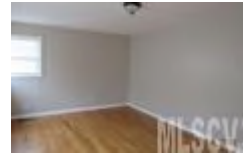
MLS #	9597590
Status	New Listing
Sub Property Type	Single Family
Area	Newton-Conover
#Bedrooms	3
Total Baths	1.1
Total Heated SqFt	1242
Total Unheated SqFt	65
Elementary School	Shuford
Middle School	Newton-Conover
High School	Newton-Conover
Approx # of Acres	0.28
Year Built	1958
Bsmt/Foundation	Crawl Space
Cooling	Heat Pump
Heating	Heat Pump

Public Remarks

Great Starter Home that's READY to be moved in! Freshly maintained Brick Ranch in the Lyle Haven neighborhood with loads of features!! Built in 1958, with 1245 finished square feet on the main living area featuring beautiful hardwoods, 3 bedrooms, 1 1/2 Baths and a single attached carport. This home is in great location at a great price. Conveniently located to schools, shopping and major transportation. Come see this home today!

Directions

From Conover, North on County Home Rd. Turn RIGHT onto 13th St NW and continue LEFT onto 8th Ave NW. Property on LEFT.



Eric Hauss
Yount Auction and Realty, Inc.
Office: 828-459-7335
Cell: 828-896-5180
PO Box 742
Claremont NC 28610
erichauss.4yount@gmail.com
www.yountauctionandrealty.com

